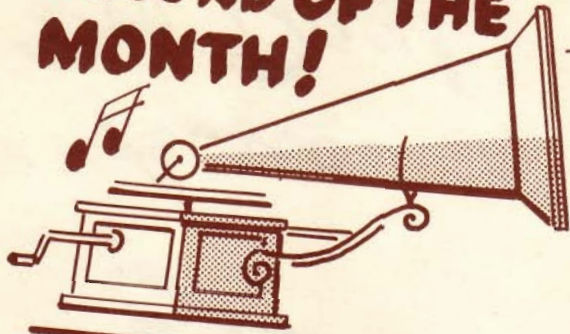


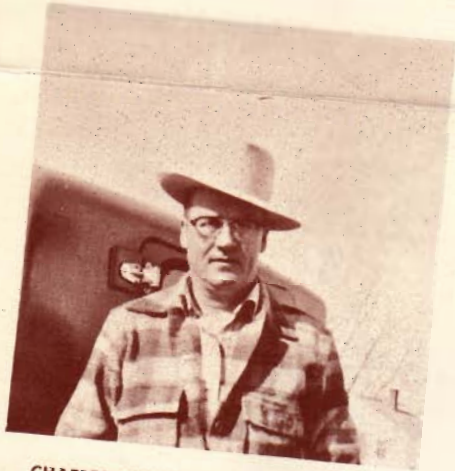
RECORD OF THE MONTH!



*Wagner Owner
Gains 39 Acres per Day
after replacing
Crawler tractor!*

What CHARLES KINGSBURY
Says about his WAGNER:—

"I purchased my Wagner in 1956. The year before I bought and used a new crawler tractor. Had I known a 4-wheel drive tractor was available when I purchased the crawler, I would have waited and bought the Wagner then."



CHARLES KINGSBURY, Denton, Montana

"Using my Wagner in 3 days of operation, I gained approximately 100 acres of field cultivation as against the crawler and saved about 130 gallons of fuel. In one season I saved 11½ days of field time and 504 gallons of fuel."

CHARLES KINGSBURY
DENTON, MONTANA
November 25, 1957

To whom it may concern:

I am an owner of TR-9 four-wheel drive Wagner Tractor. I purchased this tractor from Dan Morrison & Sons, Lewistown, Montana in 1956 and have used it for one full season in my farming operation.

Previous to owning a Wagner, I used standard two-wheel drive tractors, such as a WD-9 International, and a John Deere R. In 1955 I purchased and used a new D-6 Caterpillar Crawler. Had I known that a four-wheel drive tractor was available when I purchased the crawler, I would have waited and purchased one then.

I farm a few miles north of Denton, Montana; my land is typical of Montana, some acres are flat, other acres are rolling and other acres that are extremely hilly with deep coulees and ravines. I have gumbo and clay soil and its density and heaviness is probably as tough as any part of Fergus County. In the spring and different times of the year, I have wet spots comparable to any farm.

After using the Wagner Tractor last season for my summer-fallow and seeding operation, I am very well pleased with its operation and its economy. It is very easy to operate and handle, dust-free and there is no equal when comparing it with a crawler-type tractor. The Wagner is much easier to operate and gives me more acres per day with a better fuel economy.

Comparison of acreage production: I produced on an average with the Wagner 132 acres a day pulling a 24' Graham-Hoeme Plow using between 48 and 54 gallons of diesel fuel during an 11-hour day. With the crawler, I would produce between 90 and 96 acres a day, using approximately 44 to 49 gallons of fuel. Fuel consumption on the crawler was less per hour but I produced from 30 to 35 acres less per day pulling the same load, therefore, my Wagner uses less fuel than the crawler per acre.

Using the Wagner in 3 days of operation, I gained approximately 100 acres of field cultivation; in 27 to 30 man-hours and about 130 gallons of fuel. In my total operation I've saved 126 hours of operation; or 11.5 days of field time and 504 gallons of fuel.

I have approximately 700 hours total on this tractor, and I judge that I will put on from 350 to 400 hours each year. The reason for additional hours during the first year was because of reseeding operations and some extra work. I cultivated last year a total of 3839 acres in approximately 29 working days. As you can see, I am very well pleased with the production of the Wagner Tractor. I am well satisfied with the service I have received from Dan Morrison & Sons, the Cummins Diesel Company and Wagner Tractor, Inc. If anyone would like more information, please feel free to write, or better yet, see the Wagner in operation on my ranch.

Yours truly,

Charles Kingsbury

For additional information regarding Wagner Tractors, write to:

WAGNER TRACTOR, INC. BOX 7444, PORTLAND 20, OREGON

*A Gain
of
39
Acres
Per Day!*

WAGNER TRACTOR, INC.
P. O. Box 7444
Portland 20, Oregon



WAGNER TRACTOR MODEL 24 — 300 H.P. DIESEL POWER
OTHER MODELS RANGE FROM 110 H.P. TO 600 H.P.